



EXCLUSIVE

---

# SPIDER LIFTS AT A HIGHER LEVEL FOR 40 YEARS

---

**FALCON 200Z**  
(FALCON 66Z)





## The ultimate compact platform

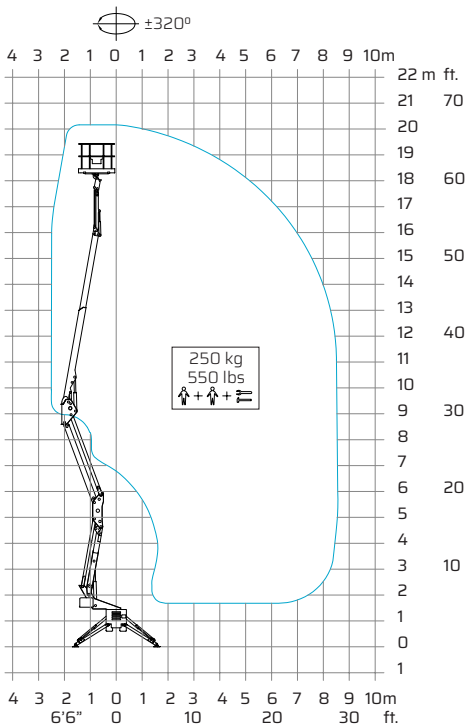
The Falcon has an extremely versatile boom configuration and machine compactness which make the Falcon models the best choice for maintainers, pruners, installers and hires.

- Facility management
- Atrium access
- Narrow access
- Tree care
- Best quality & safety
- Easy transport & propelling
- Low weight & ground pressure
- Flexible outrigger setting
- Limited setup space
- Power - Bi-energy Hybrid

The Falcon is capable of passing through a door opening a mere 0,8 m (2'7") wide and 2 m (6'6") high. Further details on the Falcon models are mentioned on the following pages.



## Falcon 200Z (Falcon 66Z)



▲ Working height and reach.

**Model:**

**Falcon 200Z**

**Falcon 66Z**

**Metric**

**US**

Working height:

20 m

65'7"

Maximum reach:

8,5 m

27'11"

Basket load:

250 kg

550 lbs

Aluminium basket:

140x70x110 cm

4'7"x2'4"x3'7"

Turret rotation:

±320°

±320°

Dimensions (transport position)

Total height:

2 m

6'6"

Total length:

5,324 m

17'6"

Total width:

0,78 m

2'7"

Gradability:

25%

25%

Weight. approx.:

2782 kg

6120 lbs\*

\*Depending on optional equipment



FALCON LIFTS A/S

Tolderlundsvej 106  
DK-5000 Odense C  
Tel: +45 66 13 11 00

falcon@falconlifts.com  
falconlifts.com

#### STANDARD EQUIPMENT:

- Articulated boom (two elements)
- Telescopic boom (main boom + extensions)
- Jib
- $\pm 320^\circ/\pm 330^\circ$  turret rotation
- Engine start and stop controls from basket
- Basket with aluminium guardrails
- Automatic basket levelling
- Basket load sensing device
- 4 hydraulic outriggers
- Power supply in basket
- Gradability approximately  $25^\circ/31^\circ$
- Drive speed max 1,5 Km/h (0,9 mph)
- Electro-hydraulic steering from the ground with remote control (wire)
- AC 1,5 kW motor
- Hour meter
- Standard boom colours Grey (RAL 7035) and chassis Blue (RAL5002)
- EN 280:2013 CE Certified
- ANSI Certified

Available with one of the following engines:

- Diesel (Kubota 2 cyl. water cooled)
- Petrol (Honda 15 HP)

#### OPTIONS:

- Dust Cover for Storage
- Nylon plates for outriggers
- Special colour
- Anti entrapment device
- Non-marking crawlers
- Basket rotation
- Air/water in basket
- Automatic stabilisation from basket

Video of Falcon 200Z

