



EXCLUSIVE

SPIDER LIFTS
AT A HIGHER LEVEL
FOR 40 YEARS

FALCON 270Z
(FALCON 88Z)





The ultimate compact platform

The Falcon has an extremely versatile boom configuration and machine compactness which make the Falcon models the best choice for maintainers, pruners, installers and hires.

- Facility management
- Atrium access
- Narrow access
- Tree care
- Best quality & safety
- Easy transport & propelling
- Low weight & ground pressure
- Flexible outrigger setting
- Limited setup space
- Power - Bi-energy Hybrid

The Falcon is capable of passing through a door opening a mere 0,8 m (2'7") wide and 2 m (6'6") high. Further details on the Falcon 270Z (88Z) is mentioned on the following pages.



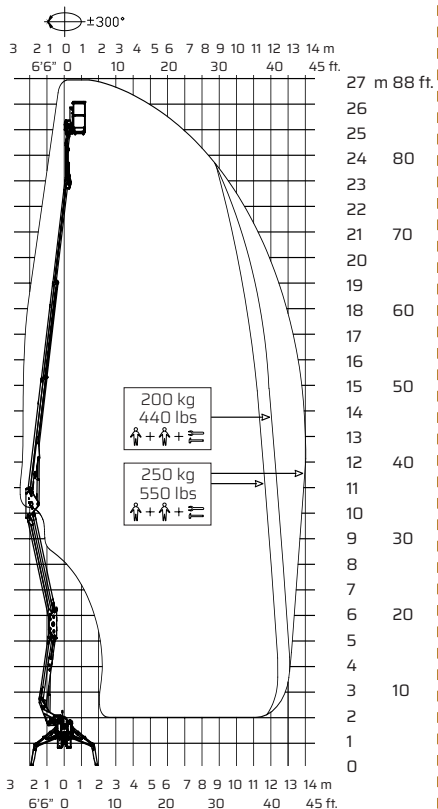


Model:

Falcon 270Z

Falcon 88Z

**Falcon 270Z
(Falcon 88Z)**



Metric

US

Working height:
Maximum reach:

27 m
14,0 m

88'7"
45'11"

Basket load:
Aluminium basket:
Turret rotation:

250 kg
140x70x110 m
+320° / -320°

550 lbs
4'7"x2'4"x3'7"
+320° / -320°

Dimensions (transport position)

Total height:
Total length:
Total width:
Gradability:
Weight approx.:

1,99 m
6,471 m
0,79 m
%
4350 kg*

6'6"
21'3"
2'7"
%
9570 lbs*

*Depending on optional equipment



FALCON LIFTS A/S

Tolderlundsvej 106
DK-5000 Odense C
Tel: +45 66 13 11 00

falcon@falconlifts.com
falconlifts.com

STANDARD EQUIPMENT:

- Articulated boom (two elements)
- Telescopic boom (main boom + 2 extensions)
- Jib - raise and drive jib functionality
- $\pm 300^\circ$ non-continuous turret rotation
- Engine start and stop by remote control
- Basket with aluminium guardrails
- Basket rotation $\pm 90^\circ$
- Automatic basket levelling and self centering
- Basket load sensing device
- 4 hydraulic outriggers
- Power supply in basket
- Gradability approximately 31°
- Dual drive speed
- Wireless remote control with graphic diagnostic display
- AC 2,2 kW motor
- Flexible outrigger settings
- Extendable track width
- Hour meter
- Go home function
- Anti Crush
- Standard boom colours Grey (RAL 7035) and chassis Blue (RAL5002)
- EN 280:2013 CE Certified
- ANSI Certified

OPTIONS:

- Dust Cover for Storage
- Special colour
- Anti entrapment device
- Non-marking crawlers
- Air/water in basket
- GSM module for remote access and monitoring
- Winch with 230 kg/506 lbs. lifting capacity

Video of Falcon 270Z
COMING SOON

Triple power source :

- Diesel (Kubota) + 24V DC Battery + 230/110 V AC