



EXCLUSIVE

SPIDER LIFTS AT A HIGHER LEVEL FOR 40 YEARS

FALCON 290 / 330 Wheel





The ultimate compact platform

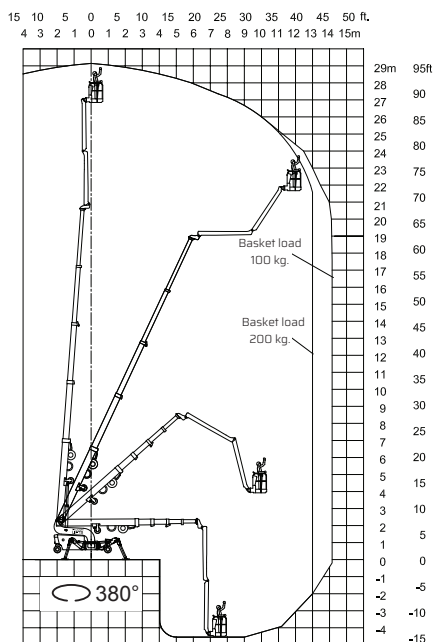
The Falcon Spider Atrium Lift is an original Falcon Spider Lift with market leading features.

The Falcon Spider Atrium Lift FALCON 290/330 Wheel was invented in the 1970's, and developed ever since. The Falcon Spider Atrium Lift FALCON 290/330 Wheel is very applicable in matters of:

- Facility management
- Atrium access
- Narrow access
- Best quality & safety
- Double jib system
- Easy transport & propelling
- Low weight & ground pressure
- Need for flexible outrigger
- Limited setup space
- Power Bi-energy Hybrid

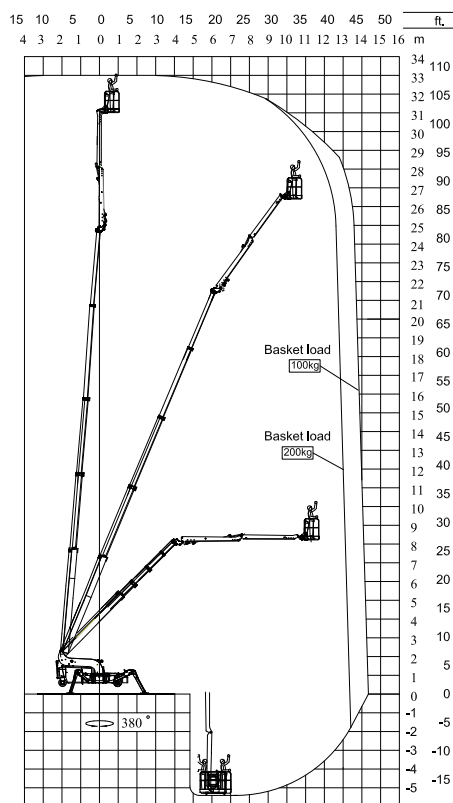
The Falcon Spider Atrium Lift is capable of passing through a door opening a mere 0,8 m wide and 1,98 m high. Further details on the Falcon Spider Atrium Lift FALCON 290/330 Wheel is mentioned on the following pages.

FALCON 290 Wheel



Working height and reach

FALCON 330 Wheel



Working height and reach



Model:

FALCON 290 Wheel

FALCON 330 Wheel

Working height:	29 m	33 m
Maximum reach:	14-15 m	14-15 m
Double jib (2 x 3 m):	6 m	6 m
Doublejib rotation	200°	200°
Basket load:	200 kg	200 kg
Aluminium basket:	(0,8 x 1,4 m)	(0,8 x 1,4 m)
Basket rotation (option):	+ / - 90°	+ / - 90°
Turret rotation:	380°	380°

Dimensions (transport position)

Total height:	1,98 m	1,98 m
Total length:	6,30 m	7,20 m
Total width:	0,8 - 0,9 m*	0,8 - 0,9 m*
Gradability (standard):	5° / 10%	5° / 10%
Weight approx.:	3.750 kg*	4.150 kg*

*Depending on optional equipment



FALCON LIFTS A/S

Tolderlundsvej 106
DK-5000 Odense C
Tel: +45 66 13 11 00

falcon@falconlifts.com
falconlifts.com

STANDARD EQUIPMENT:

- Automatic stability & outreach control
- Computer controlled (can-bus)
- Proportional control of all functions
- Self-propelled
- Battery powered with charger (200 Ah)
- Double jib
- 380° turret rotation, with integrated stop
- Individual setting of each outrigger
- Electronic checking of the power system (PLC)
- Manual pump system for emergency lowering
- Ability to self-load onto trucks or trailers
- Non marking solid tyres
- Adjustable wheel-axle
- Minimum width only 0.8 m
- Space for tools etc. in basket
- Storage room with lock in chassis
- Wireless remote control of all functions
- Falcon Service Tool (Remote access via laptop)

OPTIONS:

- +/- 90 ° basket rotation
- 220V AC power supply in the basket
- Air/water supply in the basket
- Sensor system on basket
- Diesel engine, Hatz "Silent pack" 9 kW
- Honda petrol generator 3,0 kW
- 220V AC 2,2 kW/13A direct powered electro motor
- 4-8 pcs. extra batteries
- Autosetting/levelling
- Dust Cover for Storage
- Special outrigger footplates
- Basket in various sizes
- Slope alarm
- 2 wheel drive (10 °/18 % climb)
- 3 wheel drive (15 °/26 % climb)(width 0,95 m)
- Twin wheels on rear axle
- Special colour
- Anti entrapment device
- GSM module for remote access and monitoring