



EXCLUSIVE

# SPIDER LIFTS AT A HIGHER LEVEL FOR 40 YEARS

**FALCON 135Z**  
(FALCON 44Z)







## The ultimate compact platform

The Falcon has an extremely versatile boom configuration and machine compactness which make the Falcon models the best choice for maintainers, pruners, installers and hires.

- Facility management
- Atrium access
- Narrow access
- Tree care
- Best quality & safety
- Easy transport & propelling
- Low weight & ground pressure
- Flexible outrigger setting
- Limited setup space
- Power - Bi-energy Hybrid

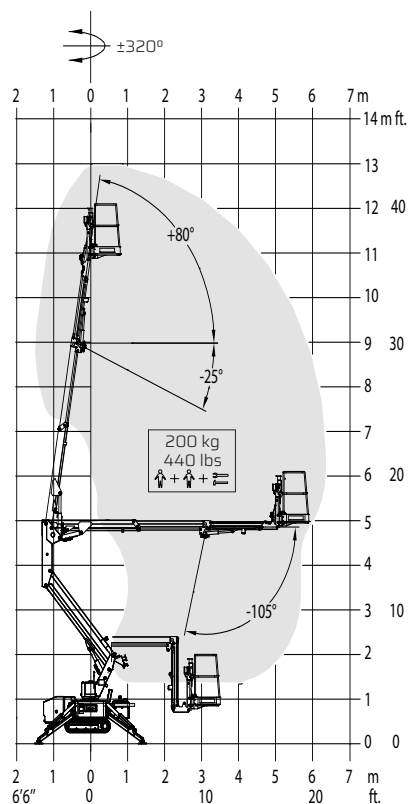
The Falcon is capable of passing through a door opening a mere 0,8 m (2'7") wide and 2 m (6'6") high. Further details on the Falcon 135Z (44Z) is mentioned on the following pages.







## Falcon 135Z (Falcon 44Z)



Working height and reach.

### Model:

Falcon 135Z

Falcon 44Z

### Metric

### US

Working height:

13 m

42'8"

Maximum reach:

6,5 m

21'4"

Basket load:

200 kg

440 lbs

Aluminium basket:

130x78x110 m

4'3"x2'7"x3'7"

Turret rotation:

±320°

±320°

### Dimensions (transport position)

Total height:

2 m

6'6"

Total length:

3,76 m

12'4"

Total width:

0,78 m

2'7"

Gradability:

31%

31%

Weight approx.:

1600 kg\*

3520 lbs\*

\*Depending on optional equipment



FALCON LIFTS A/S

Tolderlundsvej 106  
DK-5000 Odense C  
Tel: +45 66 13 11 00

falcon@falconlifts.com  
falconlifts.com

#### STANDARD EQUIPMENT:

- Articulated boom (one element)
- Telescopic boom (main boom + extensions)
- Jib
- $\pm 320^\circ$  turret rotation
- Engine start and stop controls from basket
- Basket with aluminium guardrails
- Automatic basket levelling
- Basket load sensing device
- 4 hydraulic outriggers
- Power supply in basket
- Gradability approximately 31%
- Drive speed max 1,5 Km/h (0,9 mph)
- Electro-hydraulic steering from the ground with remote control (wire)
- AC 1,5 kW motor
- Hour meter
- Standard boom colours Grey (RAL 7035) and chassis Blue (RAL5002)
- EN 280:2013 CE Certified
- ANSI Certified

#### OPTIONS:

- Dust Cover for Storage
- Special colour
- Anti entrapment device
- Non-marking crawlers
- Air/water in basket

Available with one of the following engines:

- Diesel (Lombardini)
- Petrol (Honda 15 HP)