



EXCLUSIVE

SPIDER LIFTS AT A HIGHER LEVEL FOR 40 YEARS

FS 170/FS 200 *Sigma*
FS 56/FS 66 *Sigma*



**FALCON
LIFTS**



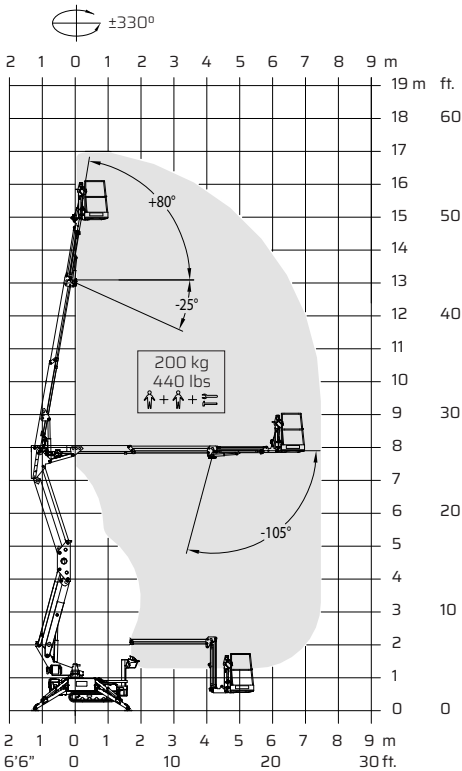
The ultimate compact platform

The Falcon Sigma has an extremely versatile boom configuration and machine compactness which make the Falcon Sigma models the best choice for maintainers, pruners, installers and hires.

- Facility management
- Atrium access
- Narrow access
- Tree care
- Best quality & safety
- Easy transport & propelling
- Low weight & ground pressure
- Flexible outrigger setting
- Limited setup space
- Power - Bi-energy Hybrid

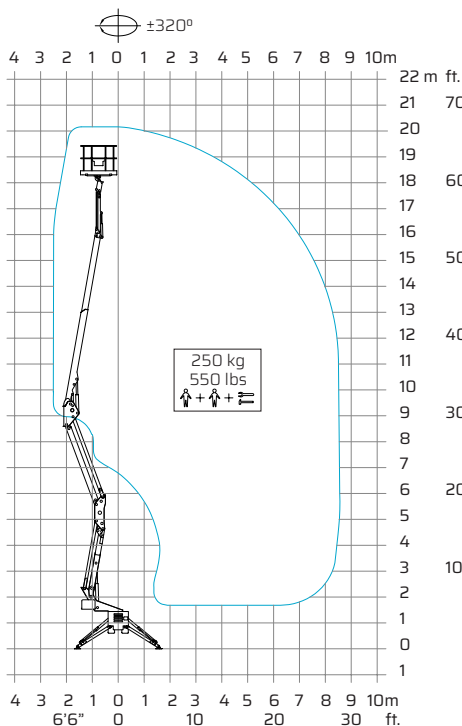
The Falcon Sigma Lift is capable of passing through a door opening a mere 0,8 m (2'7") wide and 2 m (6'6") high. Further details on the Falcon Sigma models are mentioned on the following pages.

FS 170 Sigma FS 56 Sigma



Working height and reach.

FS 200 Sigma FS 66 Sigma



Working height and reach.



Model:

FS 170 Sigma

FS 56 Sigma

Metric

US

Working height:
Maximum reach:

17 m
7,5 m

55'9"
24'7"

Basket load:
Aluminium basket:
Turret rotation:

200 kg
130x78x110 cm
±330°

440 lbs
4'3"x2'7"x3'7"
±330°

Dimensions (transport position)

Total height:
Total length:
Total width:
Gradability:
Weight approx.:

2 m
4,25 m
0,80 m
31%
2050 kg*

6'6"
13'11"
2'7"
31%
4510 lbs*

*Depending on optional equipment

Model:

FS 200 Sigma

FS 66 Sigma

Metric

US

Working height:
Maximum reach:

20 m
8,5 m

65'7"
27'11"

Basket load:
Aluminium basket:
Turret rotation:

250 kg
140x70x110 cm
±320°

550 lbs
4'7"x2'4"x3'7"
±320°

Dimensions (transport position)

Total height:
Total length:
Total width:
Gradability:
Weight approx.:

2 m
5,324 m
0,78 m
25%
2782 kg*

6'6"
17'6"
2'7"
25%
6120 lbs*

*Depending on optional equipment



FALCON LIFTS A/S

Tolderlundsvej 106
DK-5000 Odense C
Tel: +45 66 13 11 00

falcon@falconlifts.com
falconlifts.com

STANDARD EQUIPMENT:

- Articulated boom (two elements)
- Telescopic boom (main boom + extensions)
- Jib
- $\pm 320^\circ/\pm 330^\circ$ turret rotation
- Engine start and stop controls from basket
- Basket with aluminium guardrails
- Automatic basket levelling
- Basket load sensing device
- 4 hydraulic outriggers
- 110/230 V AC power supply in basket
- Gradability approximately $25^\circ/31^\circ$
- Drive speed max 1,5 Km/h (0,9 mph)
- Electro-hydraulic steering from the ground with remote control (wire)
- 110/230 V 1,5 kW motor
- Hour meter
- Standard boom colours Grey (RAL 7035) and chassis Blue (RAL5002)
- EN 280:2013 CE Certified

OPTIONS:

- Dust Cover for Storage
- Special colour
- Anti entrapment device
- Non-marking crawlers
- Air/water in basket

Available with one of the following engines:

- Diesel (Lombardini (FS170 /FS56)
- Diesel (Kubota (FS200 /FS66)
- Petrol (Honda 15 HP)

Or Lithium version

- Lithium batteries 48V 100 Ah (FS170E / FS66E)