



EXCLUSIVE

SPIDER LIFTS AT A HIGHER LEVEL FOR 40 YEARS

FS 135 *Sigma*
FS 44 *Sigma*





The ultimate compact platform

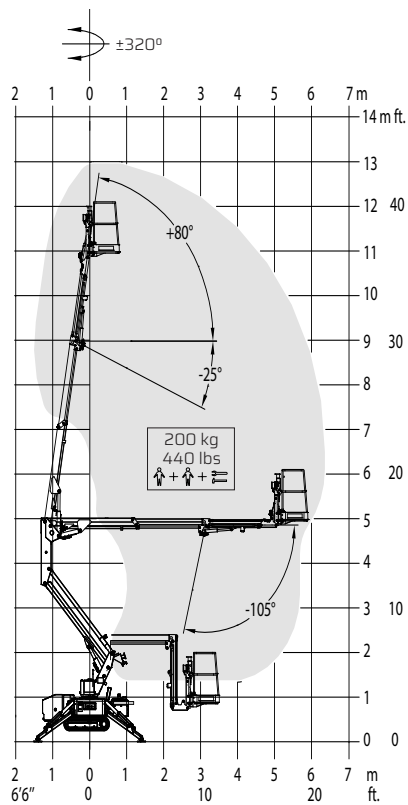
The Falcon Sigma has an extremely versatile boom configuration and machine compactness which make the Falcon Sigma models the best choice for maintainers, pruners, installers and hires.

- Facility management
- Atrium access
- Narrow access
- Tree care
- Best quality & safety
- Easy transport & propelling
- Low weight & ground pressure
- Flexible outrigger setting
- Limited setup space
- Power - Bi-energy Hybrid

The Falcon Sigma Lift is capable of passing through a door opening a mere 0,8 m (2'7") wide and 2 m (6'6") high. Further details on the Falcon FS 135/ FS44 Sigma is mentioned on the following pages.



FS 135 *Sigma*
FS 44 *Sigma*



▲ Working height and reach.

Model:

FS 135 *Sigma*

FS 44 *Sigma*

Metric

US

Working height:
Maximum reach:

13 m
6,5 m

42'8"
21'4"

Basket load:
Aluminium basket:
Turret rotation:

200 kg
130x78x110 m
±320°

440 lbs
4'3"x2'7"x3'7"
±320°

Dimensions (transport position)

Total height:
Total length:
Total width:
Gradability:
Weight approx.:

2 m
3,76 m
0,78 m
31%
1600 kg*

6'6"
12'4"
2'7"
31%
3520 lbs*

*Depending on optional equipment



FALCON LIFTS A/S

Tolderlundsvej 106
DK-5000 Odense C
Tel: +45 66 13 11 00

falcon@falconlifts.com
falconlifts.com

STANDARD EQUIPMENT:

- Articulated boom (one element)
- Telescopic boom (main boom + extensions)
- Jib
- $\pm 320^\circ$ turret rotation
- Engine start and stop controls from basket
- Basket with aluminium guardrails
- Automatic basket levelling
- Basket load sensing device
- 4 hydraulic outriggers
- 110/230 V AC power supply in basket
- Gradability approximately 31%
- Drive speed max 1,5 Km/h (0,9 mph)
- Electro-hydraulic steering from the ground with remote control (wire)
- 110/230 V 1,5 kW motor
- Hour meter
- Standard boom colours Grey (RAL 7035) and chassis Blue (RAL5002)
- EN 280:2013 CE Certified

Available with one of the following engines:

- Diesel (Lombardini)
- Petrol (Honda 15 HP)

OPTIONS:

- Dust Cover for Storage
- Special colour
- Anti entrapment device
- Non-marking crawlers
- Air/water in basket