

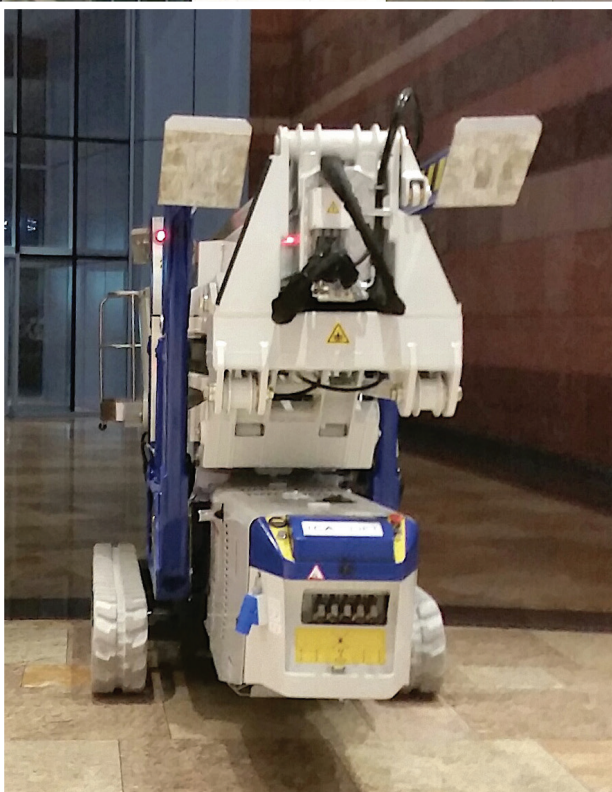


EXCLUSIVE

SPIDER LIFTS AT A HIGHER LEVEL FOR 40 YEARS

FALCON 330Z *Vario*





The ultimate compact platform

The new articulated Falcon Spider Crawler Lift FALCON 330Z Vario, sets new standards.

The Falcon Spider Crawler Lift FALCON 330Z Vario is the highest articulated Z-boom on the market.

The Falcon Spider Crawler Lift FALCON 330Z Vario is an original Falcon Spider Lift with market leading features. The Falcon Spider was invented in the 1970's, and developed ever since. The Falcon Spider Crawler Lift FALCON 330Z Vario is very applicable in matters of:

- Facility management
- Atrium access
- Narrow access
- Best quality & safety
- Easy transport & propelling
- Low weight & ground pressure
- Flexible outrigger setting
- Limited setup space
- Power - Bi-energy Hybrid
- Variable crawler chassis

The articulated Z-boom, with four section telescopic system and 110° rotation jib, offers the user a superior working envelope. Maximum working height is 33 metres, 19 metres reach at an up and over height of 11 metres.

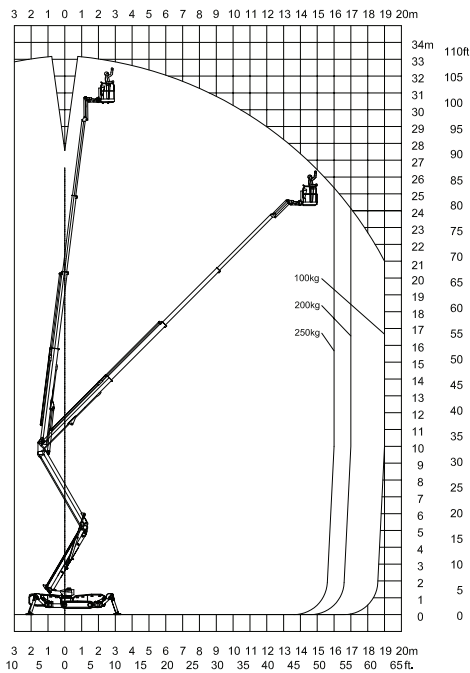
The crawler chassis with variable width from 1.3 metres to 1.6 metres, offers impressive flexibility.



Model:

FALCON 330Z Vario

FALCON 330Z Vario



Working height and reach.

Working height: 33 m
Maximum reach: 16 - 19 m
Jib rotation: 110°

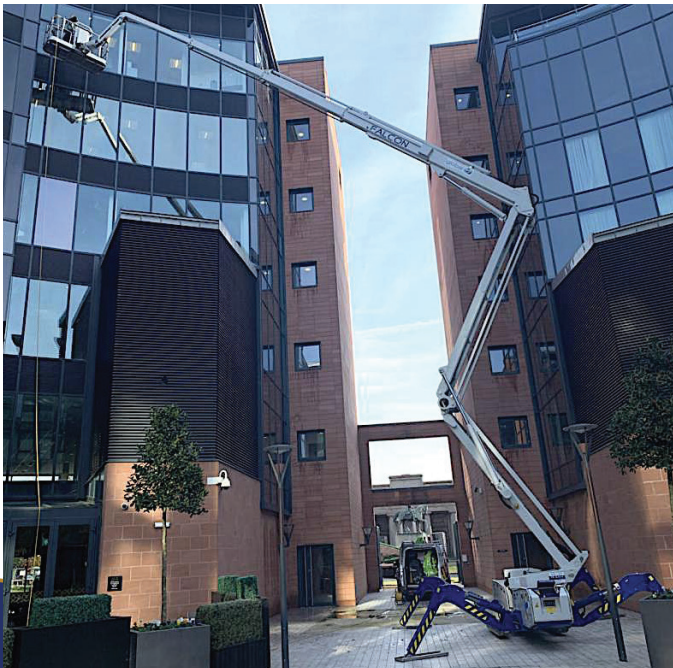
Basket load: 250 kg

Aluminium basket: (0,8 x 1,4 m)
Basket rotation: + / - 90°
Turret rotation: 380°

Dimensions (transport position)

Total height: 1,99 - 2,25 m
Total length: 7,30 m
Total width (min): 1,35 - 1,68 m
Gradability (standard): 20° / 37%
Weight approx.: 6.200 kg*

*Depending on optional equipment



FALCON LIFTS A/S

Tolderundsvej 106
DK-5000 Odense C
Tel: +45 66 13 11 00

falcon@falconlifts.com
falconlifts.com

STANDARD EQUIPMENT:

- Automatic stability & outreach control
- Computer controlled (can-bus)
- Proportional control of all functions
- Self-propelled 2 speed selection
- Battery powered with charger 400 Ah
- Jib 110°
- 380° turret rotation, with integrated stop
- +/- 90° basket rotation
- Ability to self-load onto trucks or trailers
- Electronic checking of the power system (PLC)
- Manual pump system for emergency lowering
- Adjustable track width
- Minimum width only 1,25 m
- Space for tools etc. in basket
- Storage room in chassis with lock
- Kubota diesel engine, 3 cyl. 19 kw
- Wireless remote control of all functions
- 110V/220V AC power supply in the basket
- Non marking crawlers
- Individual setting of each outrigger
- Falcon Service Tool (remote access via laptop)

OPTIONS:

- Hazard lights kit (strobe lights, working lamp)
- Protection kit (enhanced shields/cover)
- 400V AC Phase 3, 7,5 kW/16A
- Autosetting / Leveling
- Special outrigger footplates
- Special colour
- Service tool
- Anti entrapment system
- Dust Cover for Storage
- GSM module for remote access and monitoring