



EXCLUSIVE

# SPIDER LIFTS AT A HIGHER LEVEL FOR 40 YEARS

**FALCON 370 / 420** *Double Track*



**FALCON  
LIFTS**



PHOTO MANIMAGAZINE

## The ultimate compact platform

Compact design, flexibility, minimum weight, maximum reach and safety are qualities which users of the Falcon Spider Atrium Lift series appreciate in their daily work.

The Falcon Spider Atrium Crawler Lifts FALCON 370/420 Double Track are original Falcon Spider Lifts with market leading features.

The Falcon Spider Atrium Crawler Lifts FALCON 370/420 Double Track have a 37-42 m working height, and are designed as double crawler models.

The Falcon Spider Atrium Lift was originally invented in the 1970's, and developed ever since. The Falcon Spider Atrium Crawler Lifts FALCON 370/420 Double Track are very applicable in matters of:

- Facility management
- Atrium access
- Narrow access
- Best quality & safety
- Double jib system

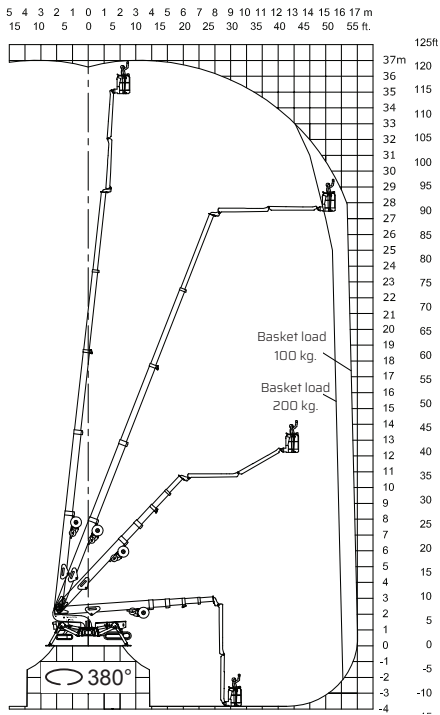
- Easy transport & propelling
- Low weight & ground pressure
- Flexible outrigger setting
- Limited setup space
- Power - Bi-energy Hybrid

The Falcon Spider Atrium Crawler Lifts FALCON 370/420 Double Track are capable of passing through a door opening a mere 1,2 m wide and 2,1 m high. Further details on the Falcon Spider Atrium Crawler Lifts FALCON 370/420 Double Track are mentioned on the following pages.

Features such as the double jib, automatic outrigger positioning, steering of outrigger and chassis from the wireless remote control, turns the Falcon Spider Atrium Lift series into a product category matching the demand of today in regards to speed, usability and safety.

The crawler version in the Falcon Spider Atrium Lift series is recognised by its impressive driving properties and userfriendliness.

## FALCON 370 Double Track



▲ Working height and reach.

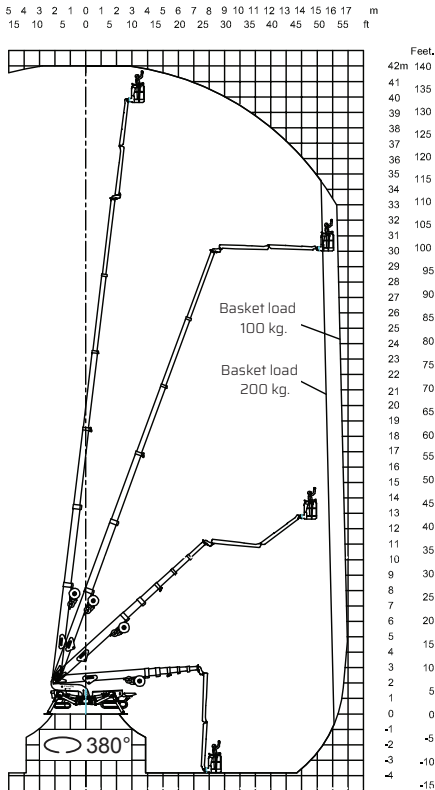


**Model:**

**FALCON 370**  
*Double Track*

**FALCON 420**  
*Double Track*

## FALCON 420 Double Track



▲ Working height and reach.

Working height:	37 m	42 m
Maximum reach:	16-17 m	16-17 m
Double jib (2 x 3 m):	6 m	6 m
Double jib rotation:	200°	200°
Basket load:	200 kg	200 kg
Aluminium basket:	(0,8 x 1,4 m)	(0,8 x 1,4 m)
Basket rotation (option):	+ / - 90°	+ / - 90°
Turret rotation:	380°	380°

### Dimensions (transport position)

Total height:	2,10 m	2,10 m
Total length:	8,10 m	8,25 m
Total width:	1,22 m	1,22 m
Gradability (standard):	30° / 58%	30° / 58%
Weight approx.:	7.500 kg*	8.200 kg*

\*Depending on optional equipment



FALCON LIFTS A/S

Tolderlundsvej 106  
DK-5000 Odense C  
Tel: +45 66 13 11 00

falcon@falconlifts.com  
falconlifts.com

#### STANDARD EQUIPMENT:

- Automatic stability & outreach control
- Computer controlled (can-bus)
- Proportional control of all functions
- Self-propelled
- Battery powered with charger (400 Ah)
- Double jib
- 380° turret rotation, with integrated stop
- Individual setting of each outrigger
- Electronic checking of the power system (PLC)
- Manual pump system for emergency lowering
- Ability to self-load onto trucks or trailers
- Double crawler system
- Front crawler section adjustable
- Adjustable track width
- Minimum width only 1,22 m
- Space for tools etc. in basket
- Storage room with lock in chassis
- Diesel engine
- Wireless remote control of all functions
- Falcon Service Tool (remote access via laptop)

#### OPTIONS:

- +/- 90° basket rotation
- 220V AC power supply in the basket
- Air / water supply in the basket
- Sensor system on basket
- Non marking crawlers
- Slope alarm
- 400V AC Phase 3, 7,5 kW/16A
- 4 pcs extra batteries
- Autosetting/levelling
- Dust Cover for Storage
- Special outrigger footplates
- Basket in various sizes
- Anemometer wind warning system
- Special colour
- GSM module for remote access and monitoring
- Anti entrapment device