



EXCLUSIVE

SPIDER LIFTS AT A HIGHER LEVEL FOR 40 YEARS

FS 520C





The Falcon Spider Atrium Crawler Lift FS 520C, the worlds tallest compact platform!

Compact design, flexibility, minimum weight, maximum reach and safety are qualities which users of The Falcon Spider Atrium Lift series appreciate in their daily work.

The Falcon Spider Atrium Crawler Lift FS 520C is an original Falcon Spider Lift with market leading features. This Falcon Spider Atrium Crawler Lift FS 520C has a 52 m working height, and is designed as a crawler model.

The Falcon Spider Atrium Lift was originally invented at first in the 1970's, and developed ever since. The Falcon Spider Atrium Crawler Lift FS 520C is very applicable in matters of:

- Facility management
- Atrium access
- Narrow access
- Best quality & safety
- Double jib system
- Easy transport & propelling

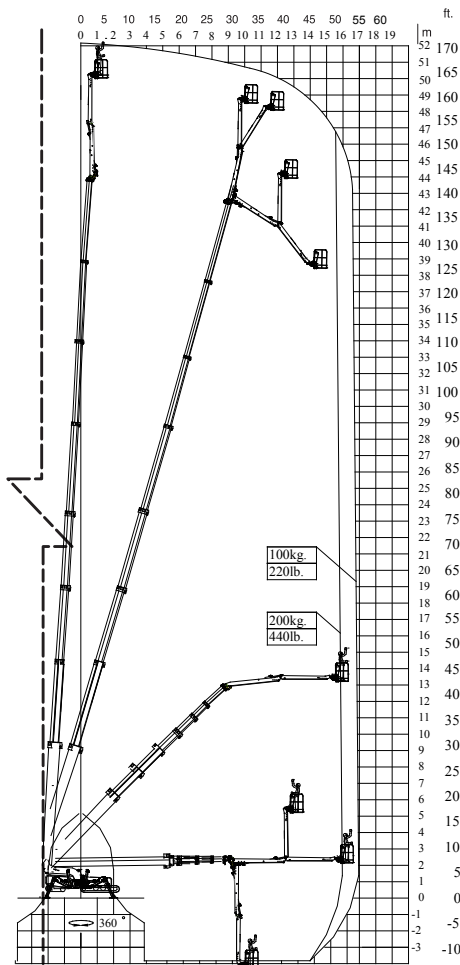
- Low weight & ground pressure
- Flexible outrigger setting
- High reach performance
- Power - Bi-energy Hybrid

The Falcon Spider Atrium Crawler Lift FS 520C is capable of passing through a door opening a mere 1,25 m wide and 2,10 m high. Further details on the Falcon Spider Atrium Crawler Lift FS 520C is mentioned on the following pages.

Features such as the double jib, automatic outrigger positioning, steering of outrigger and chassis from the wireless remote control, turns the Falcon Spider Atrium Lift series into a product category matching the demand of today in regards to speed, usability and safety.

The crawler version in the Falcon Spider Atrium Lift series is recognised by its impressive driving properties, superior boom flexibility and low ground pressure.

FS 520C



Working height and reach.
To the outermost points.



Model: FS 520C

Working height:	52 m
Maximum reach:	17 m
Double jib (2 x 3 m):	6 m
Double jib rotation:	200°
Basket load:	200 kg
Aluminium basket:	(0,8 x 1,4 m)
Basket rotation (option):	+ / - 90°
Turret rotation:	375°

Dimensions (transport position)

Total height:	2,10 m
Total length:	9,30 m
Total width (min):	1,25 m
Total width (max):	1,60 m
Gradability (standard):	20° / 37%
Weight approx.:	13.500 kg*

*Depending on optional equipment



FALCON LIFTS A/S

Tolderlundsvej 106
DK-5000 Odense C
Tel: +45 66 13 11 00

falcon@falconlifts.com
falconlifts.com

STANDARD EQUIPMENT:

- Automatic stability & outreach control
- Computer controlled (can-bus)
- Proportional control of all functions
- Self-propelled
- Battery powered with charger (180 Ah)
- Double jib
- 375° turret rotation, with integrated stop
- +/- 90° basket rotation
- Individual setting of each outrigger
- Electronic checking of the power system (PLC)
- 400V AC direct powered electro motor
- Manual pump system for emergency lowering
- Ability to self-load onto trucks or trailers
- Double crawler system
- Front crawler section adjustable
- Adjustable wheel axle
- Minimum width only 1,25 m
- Space for tools etc. in basket
- Storage room with lock in chassis
- Diesel engine
- Wireless remote control of all functions
- Falcon Service Tool (remote access via laptop)

OPTIONS:

- 220V AC power supply in the basket
- Air/water supply in the basket
- Sensor system on basket
- Non marking crawlers
- Slope alarm
- 4 pcs extra batteries
- Autosetting/levelling
- Cover
- Special outrigger footplates
- Basket in various sizes
- Special colour
- Anemometer wind warning system
- GSM module for remote access and monitoring
- Anti entrapment device