



EXCLUSIVE

SPIDER LIFTS
AT A HIGHER LEVEL
FOR 40 YEARS

FALCON 160Z
(FALCON 53Z)





The ultimate compact platform

The Falcon has an extremely versatile boom configuration and machine compactness which make the Falcon models the best choice for maintainers, pruners, installers and hires.

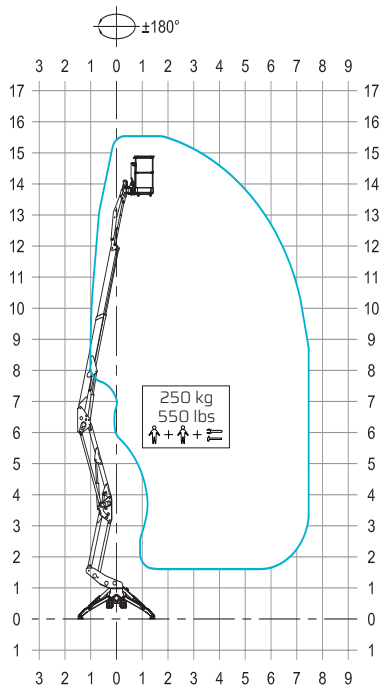
- Facility management
- Atrium access
- Narrow access
- Tree care
- Best quality & safety
- Easy transport & propelling
- Low weight & ground pressure
- Flexible outrigger setting
- Limited setup space
- Power - Bi-energy Hybrid

The Falcon is capable of passing through a door opening a mere 0,8 m (2'7") wide and 2 m (6'6") high. Further details on the Falcon 160Z (53Z) is mentioned on the following pages.





**Falcon 160Z
(Falcon 53Z)**



Model:

Falcon 160Z

Falcon 53Z

Metric

US

Working height:
Maximum reach:

15,8 m
7,5 m

51'10"
24'7"

Basket load:
Aluminium basket:
Turret rotation:

250 kg
140x70x110 m
±180°

550 lbs
4'7"x2'4"x3'7"
±180°

Dimensions (transport position)

Total height:
Total length:
Total width:
Gradability:
Weight approx.:

1,99 m
3,87 m
0,78 m
25%
2400 kg*

6'6"
12'8"
2'7"
25%
5280 lbs*

*Depending on optional equipment



Working height and reach.



FALCON LIFTS A/S

Tolderlundsvej 106
DK-5000 Odense C
Tel: +45 66 13 11 00

falcon@falconlifts.com
falconlifts.com



STANDARD EQUIPMENT:

- Articulated boom (two elements)
- Telescopic boom (main boom + 1 extension)
- Jib - raise and drive functionality
- $\pm 180^\circ$ turret rotation
- Engine start and stop controls from basket
- Basket with aluminium guardrails
- Basket rotation $\pm 90^\circ$
- Automatic basket levelling
- Basket load sensing device
- 4 hydraulic outriggers
- Automatic stabilization
- Power supply in basket
- Gradability approximately 25%
- Drive speed max 1,5 Km/h (0,9 mph)
- 2.4GHz remote control with integrated display-
Go-home function, stabilization and start/stop
- AC 2,2 kW motor
- Hour meter
- Forklift pockets
- Standard boom colours Grey (RAL 7035)
and chassis Blue (RAL5002)
- EN 280:2013 CE Certified
- ANSI Certified

OPTIONS:

- Dust Cover for Storage
- Special colour
- Anti entrapment device
- Non-marking crawlers
- Air/water in basket
- GSM module for remote access and monitoring
- Winch with 230 Kg/506 lbs.

Available with one of the following engines:

- Diesel (Lombardini)
- Petrol (Honda 15 HP)
- Lithium batteries 48V 100 Ah

Video of Falcon 160Z

